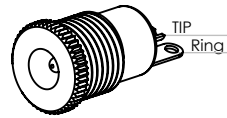


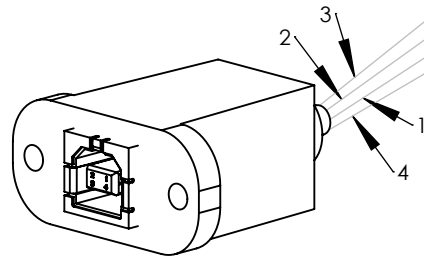
REV.	REVISIONS	DATE
1.0	CREATED	02/07/07

Power Supply Requirements

12 - 26 VDC, 1.0 - 2.0 Amp
Depends on Topology and Quantity of LEDs



Panel Mount Power Jack 2.5mm
Mouser, Kobiconn 163-4025
Center Pin Positive



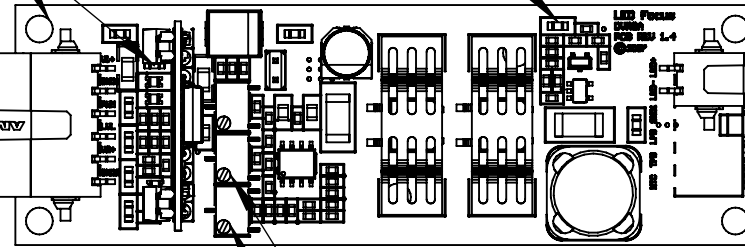
Panel Mount USB (B) Jack

Driver Power Negative
Mounting Holes and TP1

- Driver Power + (Orange)
- Driver Power - (Grey)
- USB Data + (Green)
- USB Data - (White)
- USB +5VDC (Red)
- USB GND (Black)

AMP 1445022-6
Contacts 794610-1

LED Current Measurement Point
1VDC = 1AMP
Reference to Driver Power Negative Rail

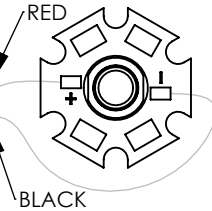


LED Current Set 300mA to 3 Amps
Factory Set to 1.0 Amp with 12VDC P.S.
Turn Clock Wise To Increase Current

LED Current Limit Set 300mA to 3 Amps
Factory Set to 1.5 Amps with 12VDC P.S.
C.C.W. to Raise Limit

LED Connections

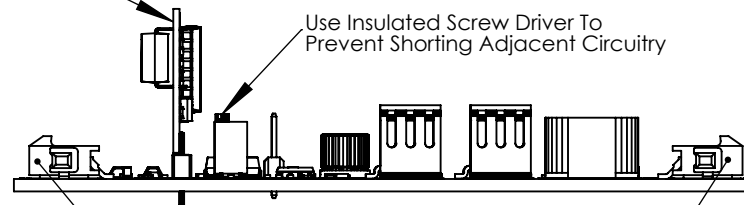
Series, Parallel or
Mixed Topologies



AMP 1445022-2
Contacts 794610-1

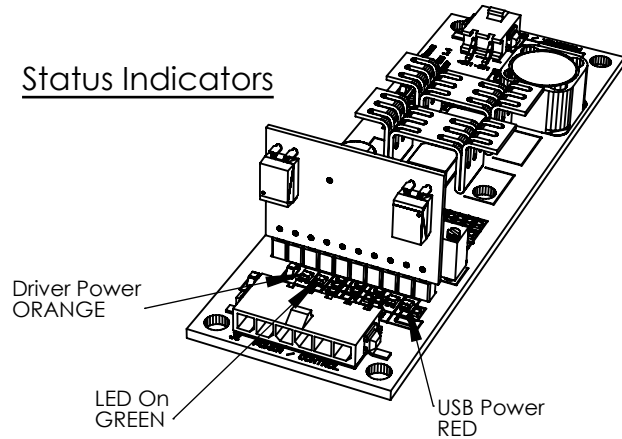
USB Module

Opto-Isolated From
LED Driver Power



Vertical Mount Plugs Available. Horizontal Shown

Status Indicators



UNLESS OTHERWISE SPECIFIED:		NAME	DATE
DIMENSIONS ARE IN INCHES		DETAIL	02/07/07
TOLERANCES:		3D MODEL	
FRACTIONAL ±		ENGINEER	
ANGULAR: MACH ± BEND ±		CHECKED	
TWO PLACE DECIMAL ±.01		ENG APPR.	
THREE PLACE DECIMAL ±.005		MFG APPR.	
INTERPRET GEOMETRIC TOLERANCING PER:		Q.A.	
MATERIAL		PROPRIETARY AND CONFIDENTIAL THE INFORMATION CONTAINED IN THIS DRAWING IS THE SOLE PROPERTY OF LED FOCUS. ANY REPRODUCTION IN PART OR AS A WHOLE WITHOUT THE WRITTEN PERMISSION OF LED FOCUS IS PROHIBITED.	
FINISH			
DO NOT SCALE DRAWING			



TITLE:
USB Controlled LED Driver
Connection Detail

DWG. NO. REV
DVR3A with USBopto Module 1.0

SIZE: A SCALE: 1:1 SHEET 1 OF 1

D

C

B

A

1

2

3

4

5